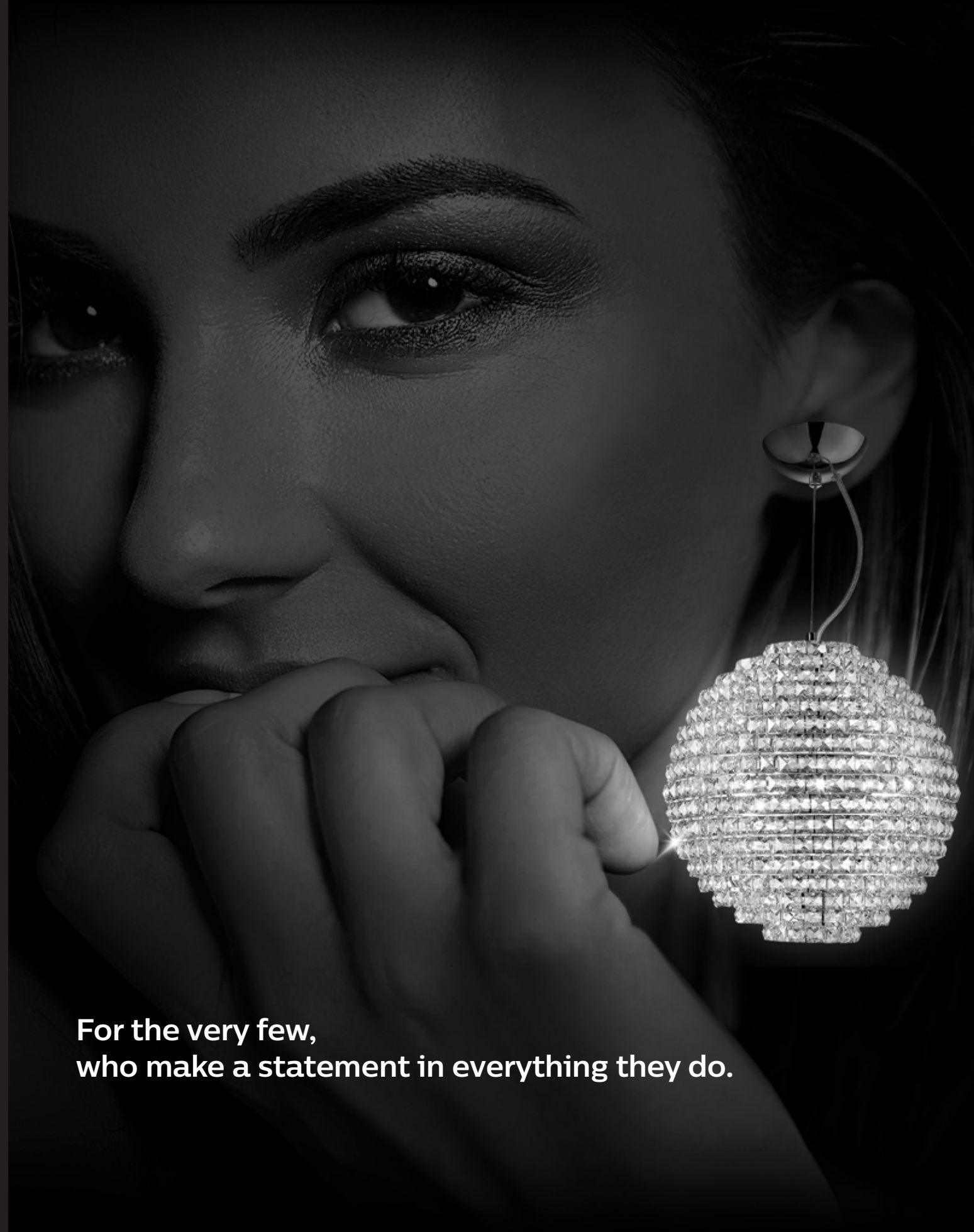


PHILIPS



**For the very few,
who make a statement in everything they do.**



**For those
who rise beyond the mundane.**



For those with a taste for the refined.



Philips Le Cristal

The refined art of elegance,
now in a new light.

With Le Cristal Philips takes lighting
into a different league. A league where
art, design and technology come
together to create an experience that
lives up to the fine tastes of people.



Premium vacuum glass for sparkling light effect in elegant red copper finish, curated for *designer homes*.

Philips Adonis

Model Number	581855
Application	Pendant
Color	Red copper
Material	Vacuum plated glass in half red copper and half clear
Voltage	240V/50 HZ
Dimensions (CM)	Diameter-77 *Height-178
No. of Bulb Holders	10
Holder & Plug Type	G9
Recommended Bulb	LED, CFL or Incandescent Bulbs can be used
Wattage	28 W Max. for each holder



Aesthetic design in premium vacuum glass in Red Copper and Chrome finish for that *timeless feel.*

Philips Adonis

Model Number	581856
Application	Pendant
Color	Chrome and red copper
Material	Vacuum plated glass in red copper
Voltage	240V/50 HZ
Dimensions (CM)	Diameter-77 *Height-178
No. of Bulb Holders	10
Holder & Plug Type	G9
Recommended Bulb	LED, CFL or Incandescent Bulbs can be used
Wattage	28 W Max. for each holder



**Exclusive crystal pendant
light in chrome finish for
*homes with a personality.***

Philips Allure

Model Number	581842
Application	Pendant
Color	Chrome
Material	Class a clear crystal
Voltage	240V/50 HZ
Dimensions (CM)	Diameter-40 *Height-168
No. of Bulb Holders	5
Holder & Plug Type	G9
Recommended Bulb	LED, CFL or Incandescent Bulbs can be used
Wattage	42 W Max. for each holder



Unique crystal pendant in a special French gold finish to add a touch of sparkle to your special house.

Philips Allure

Model Number	581843
Application	Pendant
Color	French gold
Material	Class a clear crystal
Voltage	240V/50 HZ
Dimensions (CM)	Diameter-30 *Height-36
No. of Bulb Holders	4
Holder & Plug Type	G9
Recommended Bulb	LED, CFL or Incandescent Bulbs can be used
Wattage	42 W Max. for each holder



Unparalleled amber glass design in chrome finish for a *stylish home.*

Philips Blossom

Model Number	581859
Application	Chandelier
Color	Chrome
Material	Pressed amber glass
Voltage	240V/50 HZ
Dimensions (CM)	Diameter-50 *Height-174
No. of Bulb Holders	4
Holder & Plug Type	E27
Recommended Bulb	LED, CFL or Incandescent Bulbs can be used
Wattage	40 W Max. for each holder



Exclusive crystals in refined stainless steel finish to add *glamour* to your home.

Philips Caesar

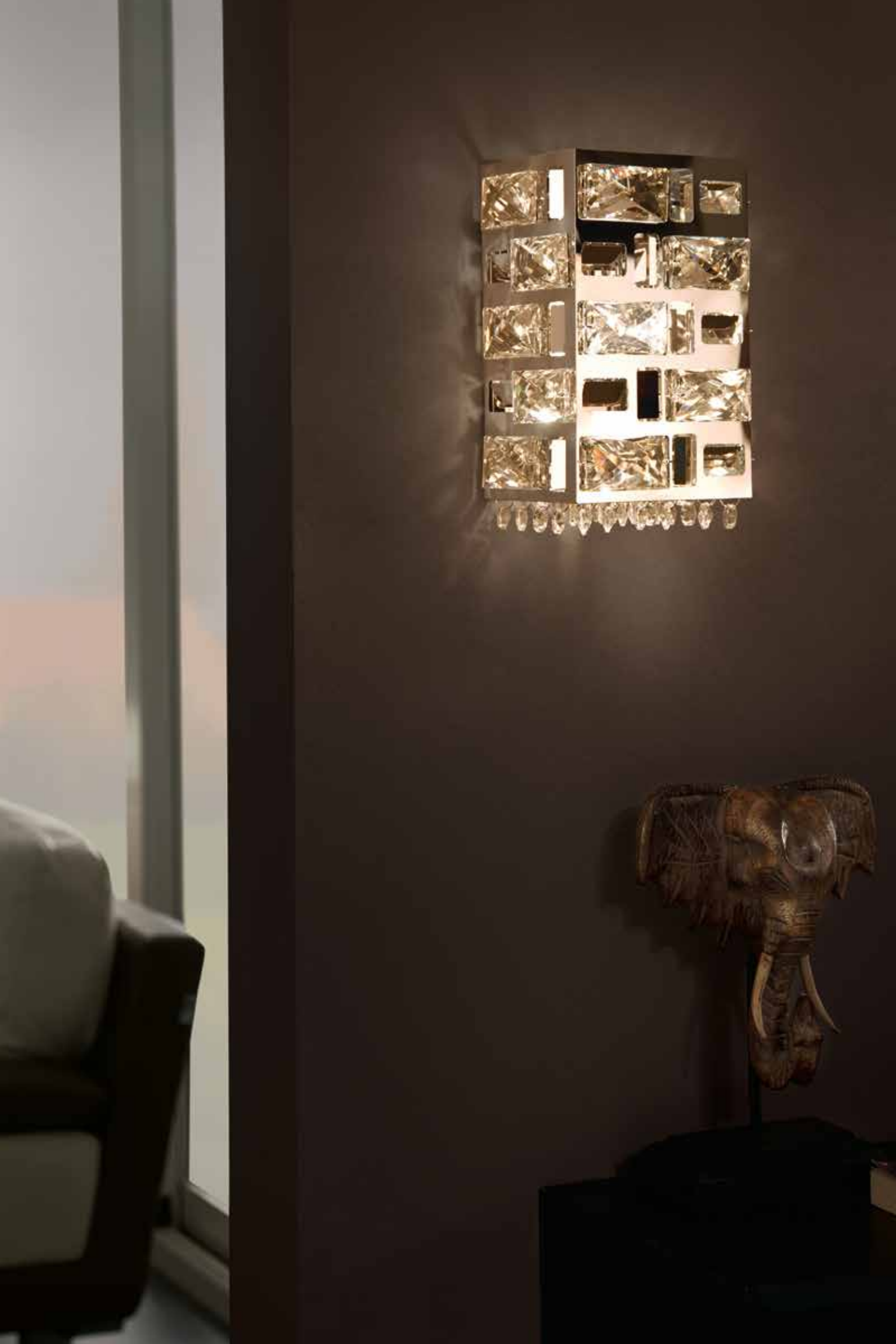
Model Number	581863
Application	Chandelier
Color	Stainless steel finish
Material	Beaded with class a clear crystal
Voltage	240V/50 HZ
Dimensions (CM)	L40*W40*H19
No. of Bulb Holders	5
Holder & Plug Type	G9
Recommended Bulb	LED, CFL or Incandescent Bulbs can be used
Wattage	33 W Max. for each holder



Finest crystals in contemporary stainless steel finish for a royal look.

Philips Caesar

Model Number	581864
Application	Pendant
Color	Stainless steel finish
Material	Beaded with class a clear crystal
Voltage	240V/50 HZ
Dimensions (CM)	Diameter -46.5 *Height-145
No. of Bulb Holders	6
Holder & Plug Type	G9
Recommended Bulb	LED, CFL or Incandescent Bulbs can be used
Wattage	42 W Max. for each holder



Premium crystals in aesthetic stainless steel finish for the *ultra-modern house.*

Philips Caesar

Model Number	581865
Application	Single wall light
Color	Stainless steel
Material	Beaded with class a clear crystal
Voltage	240V/50 HZ
Dimensions (CM)	W14*H21*D13
No. of Bulb Holders	1
Holder & Plug Type	G9
Recommended Bulb	LED, CFL or Incandescent Bulbs can be used
Wattage	42 W Max. for each holder



Unequalled crystals set in stainless steel finish chandelier for your plush interiors.

Philips Cameo

Model Number	581849
Application	Chandelier
Color	Stainless steel
Material	Stainless steel & clear crystal
Voltage	240V/50 HZ
Dimensions (CM)	Diameter -58 *Height-25
No. of Bulb Holders	5
Holder & Plug Type	G9
Recommended Bulb	LED, CFL or Incandescent Bulbs can be used
Wattage	28 W Max. for each holder



**Designer stainless steel
finish chandelier with premium
crystals for your *lavish home*.**

Philips Cameo

Model Number	581850
Application	Chandelier
Color	Stainless steel
Material	Stainless steel & clear crystal
Voltage	240V/50 HZ
Dimensions (CM)	L41*W41*H22
No. of Bulb Holders	5
Holder & Plug Type	G9
Recommended Bulb	LED, CFL or Incandescent Bulbs can be used
Wattage	28 W Max. for each holder



**Sophisticated chandelier
made of the choicest glass crystals
in chrome finish to compliment
your *luxurious home*.**

Philips Chalice

Model Number	581841
Application	Chandelier
Color	Chrome
Material	Class a clear crystal & cognac glass
Voltage	240V/50 HZ
Dimensions (CM)	Diameter -52 *Height-22
No. of Bulb Holders	6
Holder & Plug Type	G9
Recommended Bulb	LED, CFL or Incandescent Bulbs can be used
Wattage	42 W Max. for each holder



Finest crystals in superb chrome finish to add style to your house.

Philips Corona

Model Number	581846
Application	Chandelier
Color	Chrome
Material	Mirror stainless steel shade with clear crystal
Voltage	240V/50 HZ
Dimensions (CM)	Diameter -51 *Height-144
No. of Bulb Holders	7
Holder & Plug Type	G9
Recommended Bulb	LED, CFL or Incandescent Bulbs can be used
Wattage	42 W Max. for each holder



**Superior-grade crystals set
in mirror stainless steel with
chrome finish for *refined decor.***

Philips Corona

Model Number	581847
Application	Chandelier
Color	Chrome
Material	Mirror stainless steel shade with clear crystal
Voltage	240V/50 HZ
Dimensions (CM)	Diameter -51 *Height-18
No. of Bulb Holders	7
Holder & Plug Type	G9
Recommended Bulb	LED, CFL or Incandescent Bulbs can be used
Wattage	42 W Max. for each holder



Artistic design with premium crystals in fine chrome finish, for the *avant-garde* life.

Philips Corona

Model Number	581848
Application	Single wall light
Color	Chrome
Material	Mirror stainless steel shade with clear crystal
Voltage	240V/50 HZ
Dimensions (CM)	W16*H16*D8
No. of Bulb Holders	1
Holder & Plug Type	G9
Recommended Bulb	LED, CFL or Incandescent Bulbs can be used
Wattage	42 W Max. for each holder



Extraordinary crystals in an elegant stainless steel finish for that *wondrous light spread*.

Philips Corral

Model Number	581845
Application	Chandelier
Color	Stainless steel
Material	Woven laser cut anodized silver aluminum rod diffuser with clear crystal
Voltage	240V/50 HZ
Dimensions (CM)	L51*W51*H18.5
No. of Bulb Holders	5
Holder & Plug Type	G9
Recommended Bulb	LED, CFL or Incandescent Bulbs can be used
Wattage	42 W Max. for each holder



Sumptuous ivory gold finish crystal pendant to give an exclusive feeling to *your house*.

Philips Crescent

Model Number	581844
Application	Pendant
Color	Ivory gold
Material	Ivory gold metal frame clear crystal
Voltage	240V/50 HZ
Dimensions (CM)	Diameter -46 *Height-184
No. of Bulb Holders	5
Holder & Plug Type	G9
Recommended Bulb	LED, CFL or Incandescent Bulbs can be used
Wattage	42 W Max. for each holder



Choicest crystals with chrome finish in a grand heritage design for a royal feel.

Philips Monarch

Model Number	581857
Application	Chandelier
Color	Chrome
Material	Woven laser cut anodized silver aluminum rod diffuser with clear crystal
Voltage	240V/50 HZ
Dimensions (CM)	Diameter -66 *Height-180
No. of Bulb Holders	6
Holder & Plug Type	E14
Recommended Bulb	LED, CFL or Incandescent Bulbs can be used
Wattage	42 W Max. for each holder



Impressive crystals with chrome finish in a bespoke heritage design.

Philips Monarch

Model Number	581858
Application	Single Wall Light
Color	Chrome
Material	Woven laser cut anodized silver aluminum rod with clear crystal
Voltage	240V/50 HZ
Dimensions (CM)	Diameter -18 *Height-24
No. of Bulb Holders	1
Holder & Plug Type	E14
Recommended Bulb	LED, CFL or Incandescent Bulbs can be used
Wattage	42 W Max. for each holder



An aspirational look with clear curving glass molded in mushroom strip with an elegant chrome finish.

Philips Mushroom

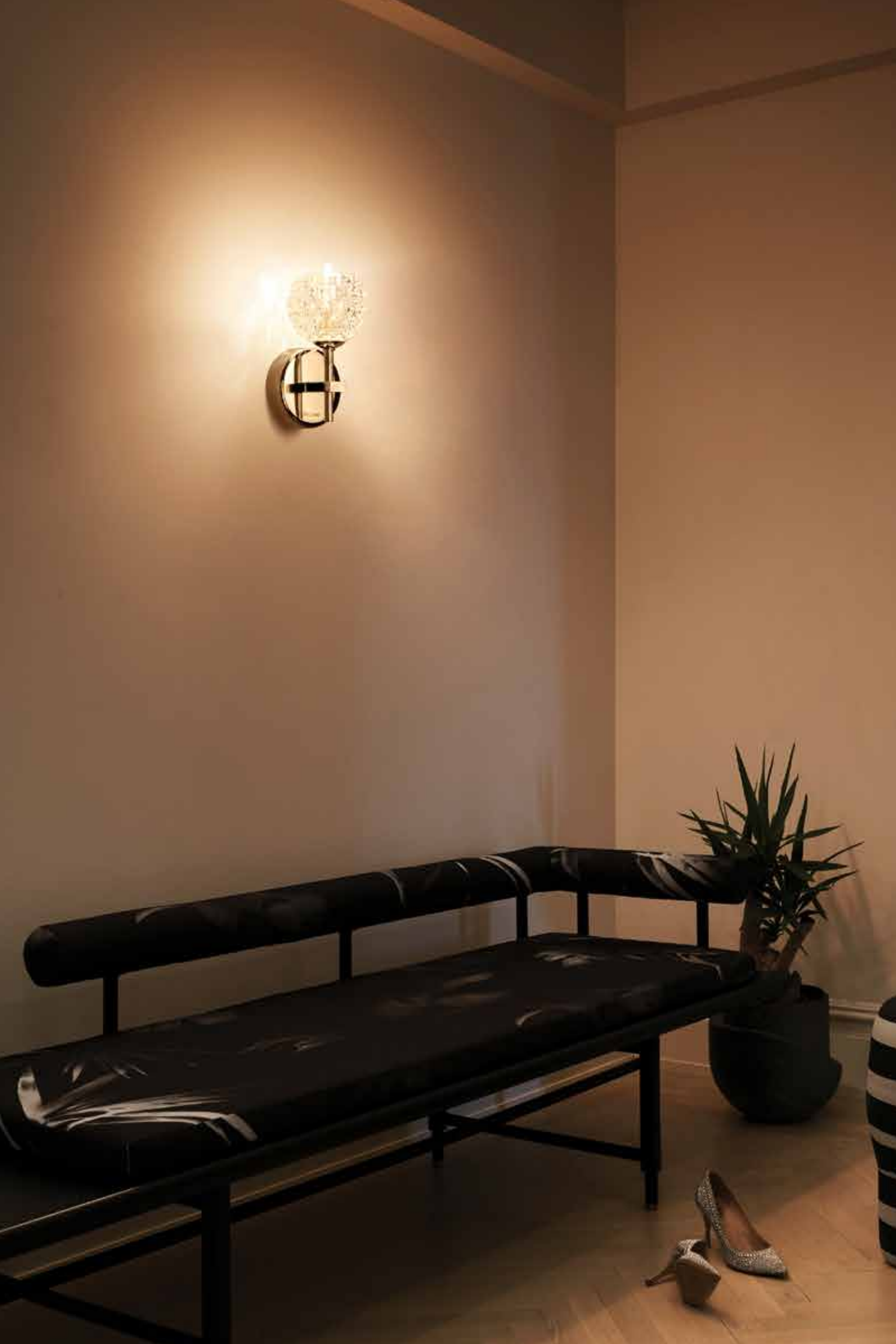
Model Number	581861
Application	Chandelier
Color	Chrome
Material	Clear curving glass mushroom strip
Voltage	240V/50 HZ
Dimensions (CM)	Diameter -59 *Height-28
No. of Bulb Holders	6
Holder & Plug Type	G9
Recommended Bulb	LED, CFL or Incandescent Bulbs can be used
Wattage	42 W Max. for each holder



Clear curving glass molded in mushroom strip with chrome finish for your contemporary home.

Philips Mushroom

Model Number	581862
Application	Chandelier
Color	Chrome
Material	Clear curving glass mushroom strip
Voltage	240V/50 HZ
Dimensions (CM)	Diameter -59 *Height-144
No. of Bulb Holders	6
Holder & Plug Type	G9
Recommended Bulb	LED, CFL or Incandescent Bulbs can be used
Wattage	42 W Max. for each holder



Wall light made of premium glass to add an exquisite sparkle to your lovely home.

Philips Regalia

Model Number	581851
Application	Single Head Wall Light
Color	Chrome
Material	Machine pressed clear glass
Voltage	240V/50 HZ
Dimensions (CM)	W12*H17*D14
No. of Bulb Holders	1
Holder & Plug Type	G9
Recommended Bulb	LED, CFL or Incandescent Bulbs can be used
Wattage	42 W Max. for each holder



Classic wall light made of pressed clear glass with chrome finish for *elite homes*.

Philips Regalia

Model Number	581852
Application	Double Head Wall Light
Color	Chrome
Material	Machine pressed clear glass
Voltage	240V/50 HZ
Dimensions (CM)	W23*H15*D10
No. of Bulb Holders	2
Holder & Plug Type	G9
Recommended Bulb	LED, CFL or Incandescent Bulbs can be used
Wattage	42 W Max. for each holder



**Contemporary design
made of superior pressed
clear glass in chrome finish to
brighten up your home.**

Philips Regalia

Model Number	581853
Application	Chandelier
Color	Chrome
Material	Machine pressed clear glass
Voltage	240V/50 HZ
Dimensions (CM)	Diameter -76 *Height-146
No. of Bulb Holders	12
Holder & Plug Type	G9
Recommended Bulb	LED, CFL or Incandescent Bulbs can be used
Wattage	42 W Max. for each holder



Distinctive chandelier in finest glass with chrome & red copper finish for that *unique style.*

Philips Umbra

Model Number	581854
Application	Chandelier
Color	Chrome & red copper
Material	Double capsule glass inside clear glass outside
Voltage	240V/50 HZ
Dimensions (CM)	Diameter -72 *Height-96
No. of Bulb Holders	8
Holder & Plug Type	G9
Recommended Bulb	LED, CFL or Incandescent Bulbs can be used
Wattage	42 W Max. for each holder